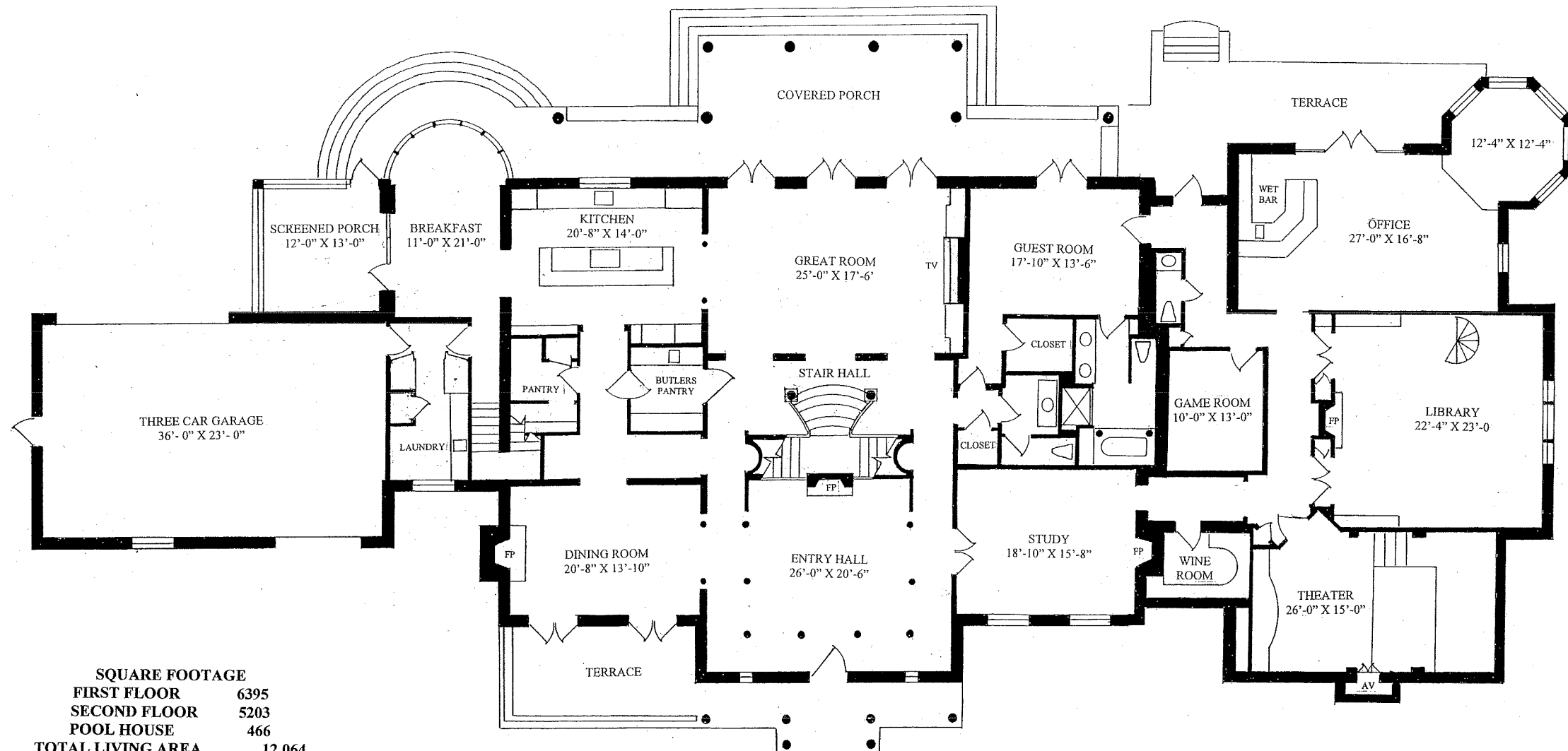


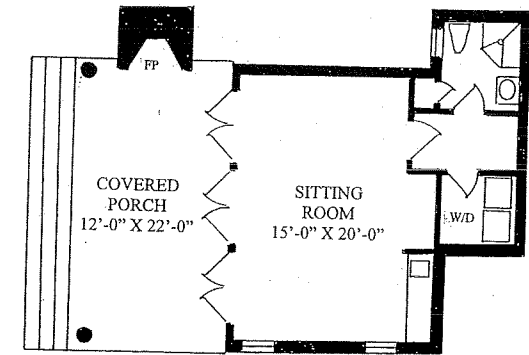
5225 NICHOL STREET



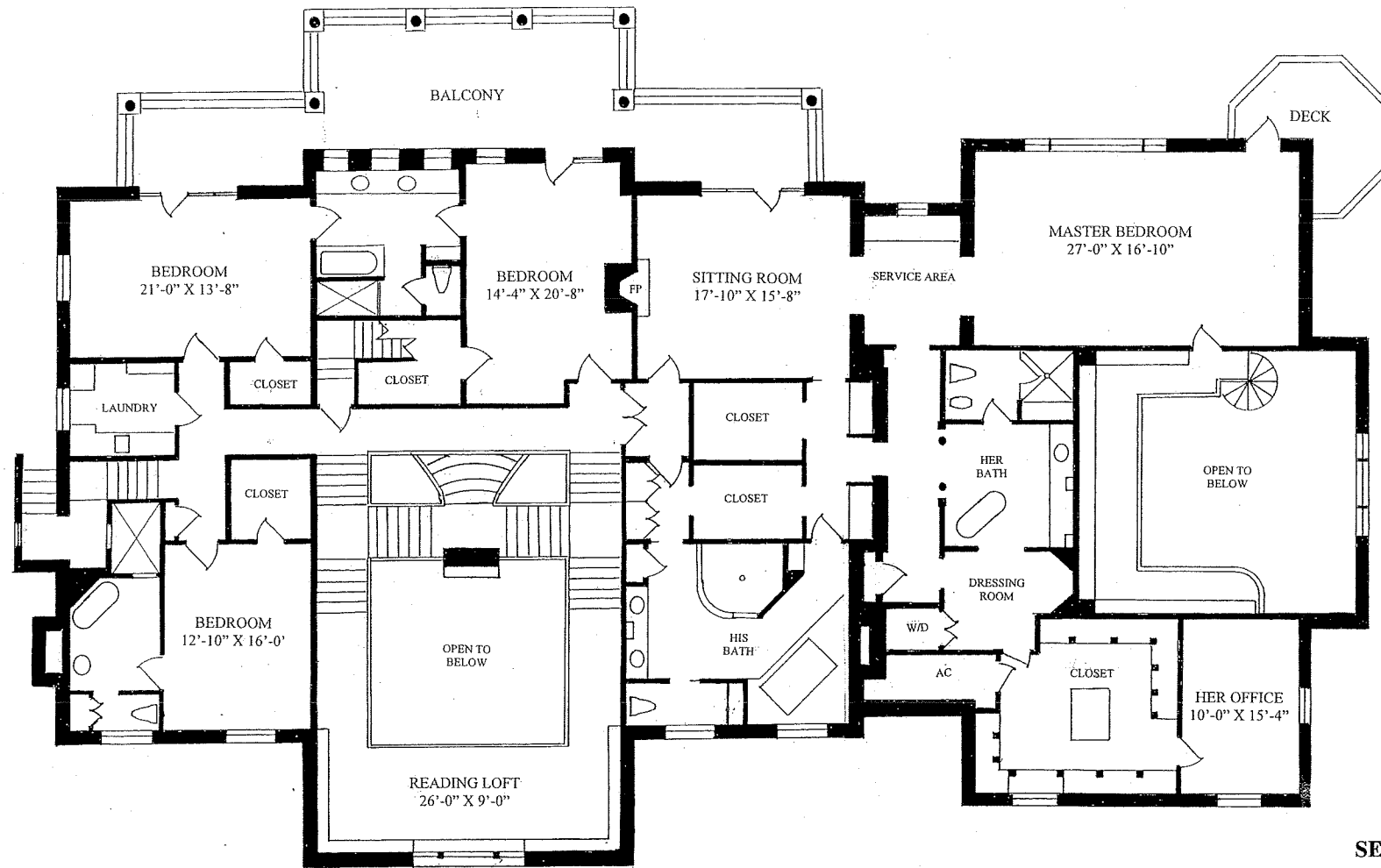
SQUARE FOOTAGE	
FIRST FLOOR	6395
SECOND FLOOR	5203
POOL HOUSE	466
TOTAL LIVING AREA	12,064
GARAGE	950
SCREENED PORCH	196
BACK PORCH	679
FRONT PORCH AND TERRACE	409
SECOND FLOOR BALCONY	604
POOL HOUSE PORCH	264
TOTAL	15,641

The Toni Everett Company is the Representative of the Seller. Note: Every effort has been made to provide accurate information, however, we are not responsible for errors omissions, misstatements of facts, prior sale, change of price or withdrawal from the market without notice.

5225 NICHOL STREET



POOL HOUSE



SECOND FLOOR

The Toni Everett Company is the Representative of the Seller.
Note: Every effort has been made to provide accurate information, however, we are not responsible for errors omissions, misstatements of facts, prior sale, change of price or withdrawal from the market without notice.