

CURRENT DEVELOPMENTS



GEORGETOWN

MIX USE DEVELOPMENT

South Westshore, Tampa, Florida
Pre-Pre Sale

108 acres – 80 acres uplands
Multi development lots – Single Family
\$450,000 to \$6,600,000
Zero Lot Lines Lots \$450,000
Apartment complex over 600 Units
All Commercial
2015 Infrastructure permits in process
Open Bay Island - over 50% Letters Of Intent
Island 2 - 30% Letters Of Intent
Hard contracts in 2016

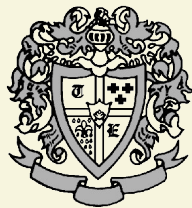


THE AQUATICA

NOV 2015 - CONSTRUCTION COMMENCING

High-rise on Bayshore Boulevard,
Tampa, Florida

Pre-selling for a delivery date of
December 2017 / January 2018
Toni Everett



The TONI EVERETT Co.
Licensed Real Estate Broker

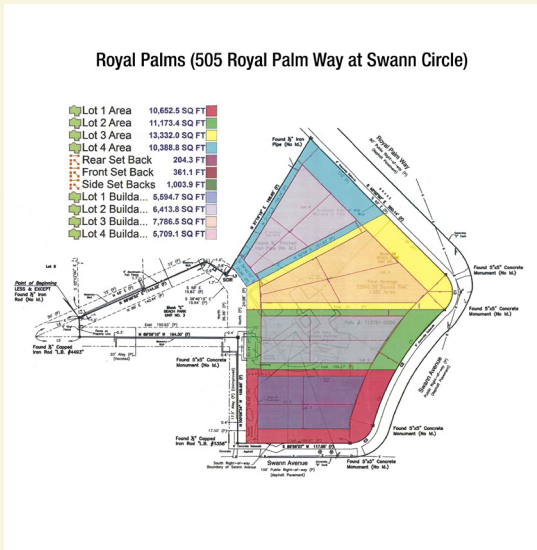
CURRENT DEVELOPMENTS



THE FINALE

SOLD OUT

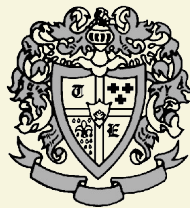
Sand Key Beach, Clearwater, Florida
Sold out in 6 weeks by Toni Everett.
Delivery date: September 2014
Closed and occupied all cash buyers.



ROYAL PALMS

SOLD OUT

South Tampa at Swann Ave. & Royal Palm Way
4 lots
Residential single family home site
Under contract for one single-family home.



The TONI EVERETT Co.
Licensed Real Estate Broker